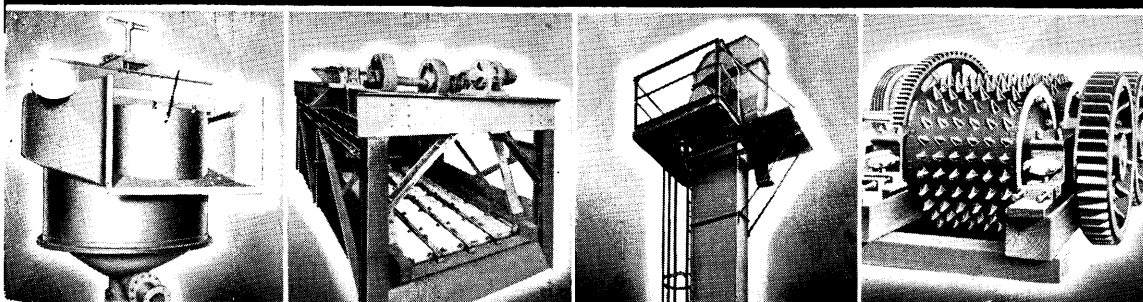


W I L M O T





Views of

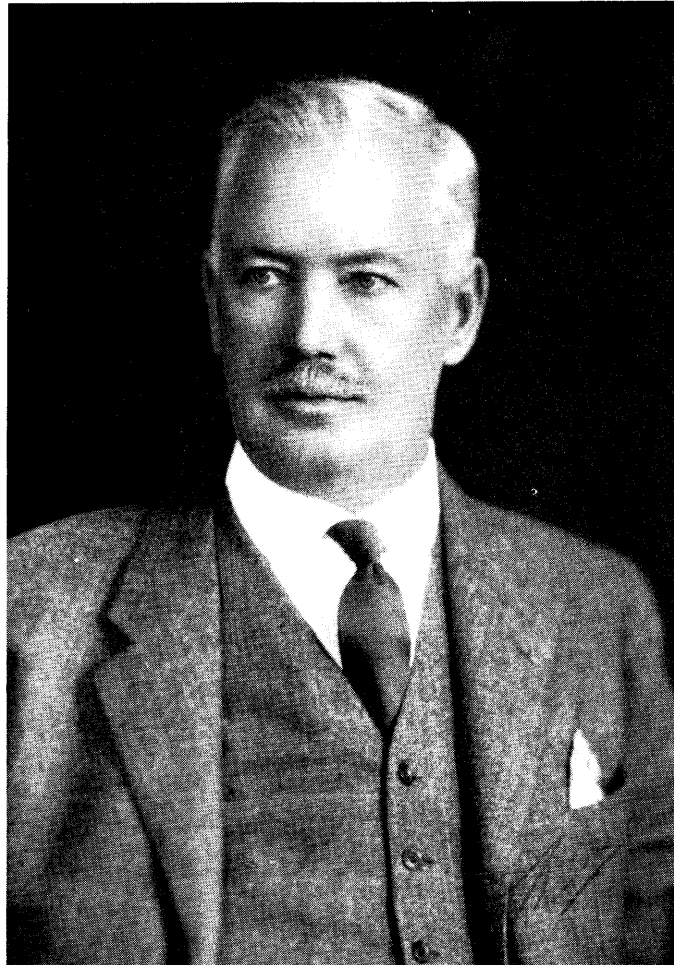
**DESIGNING AND
MANUFACTURING
FACILITIES**

of

WILMOT ENGINEERING COMPANY

OFFICE: HAZLETON, PA.

PLANT: WHITE HAVEN, PA.



GEORGE W. WILMOT
1867 - 1936

FOUNDER
WILMOT ENGINEERING CO.



Wilmot Engineering Company

Our Contribution To Industry



We are the originators of the Keystone Rivetless Chain. Our business was founded with this chain as our first product. We feel that we have pioneered the most perfect chain that can be obtained today, for elevators and conveyors used in the Coal Industry.

After 31 years as manufacturers of conveying equipment, continued demand has proven the Keystone Rivetless Chain has stood the test of service and satisfaction.

President



Air View of the Wilmot Plant, White Haven, Pa. Main Office: Hazleton, Pa.

Wilmot Engineering Company

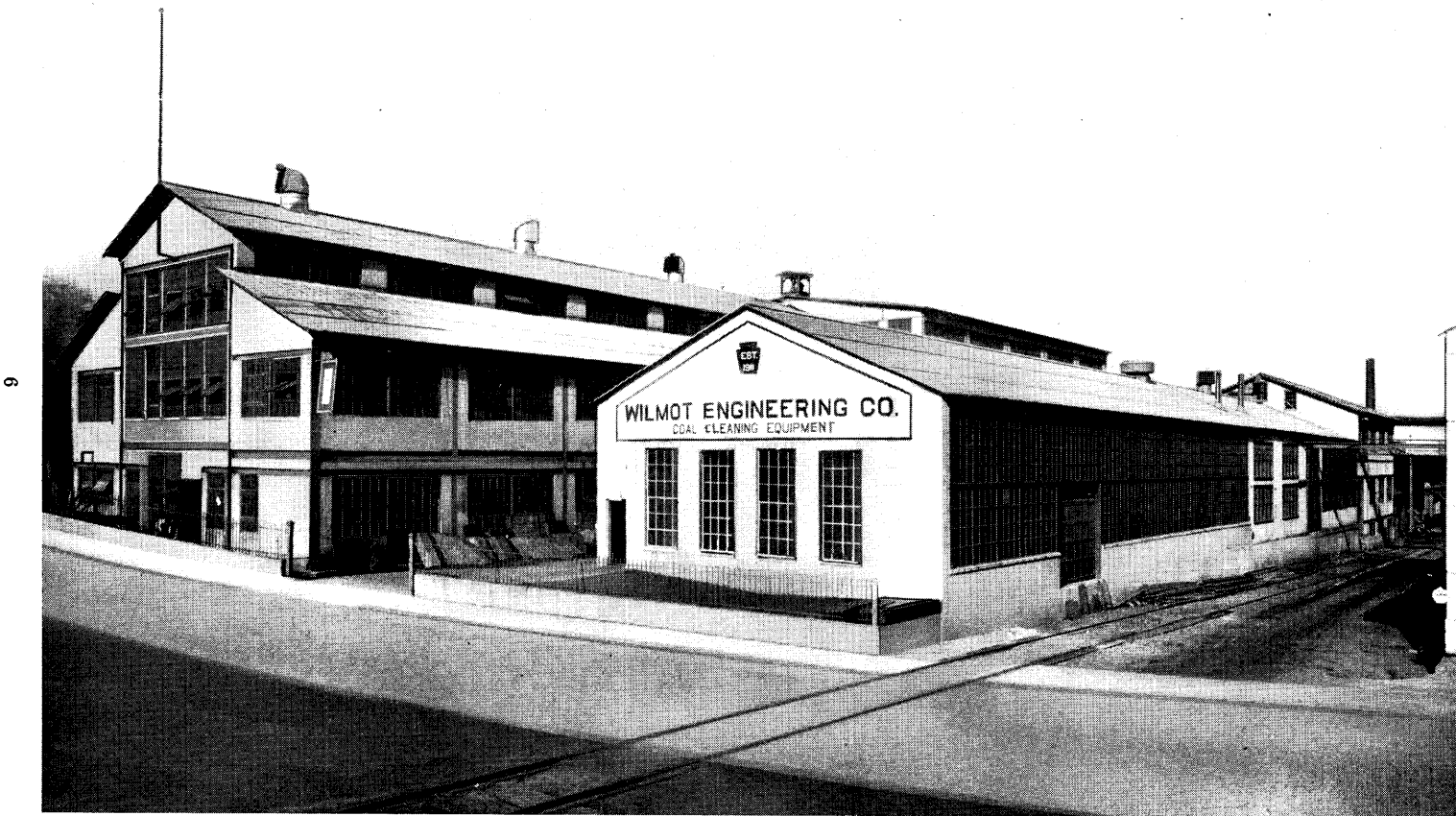




Wilmot Engineering Company



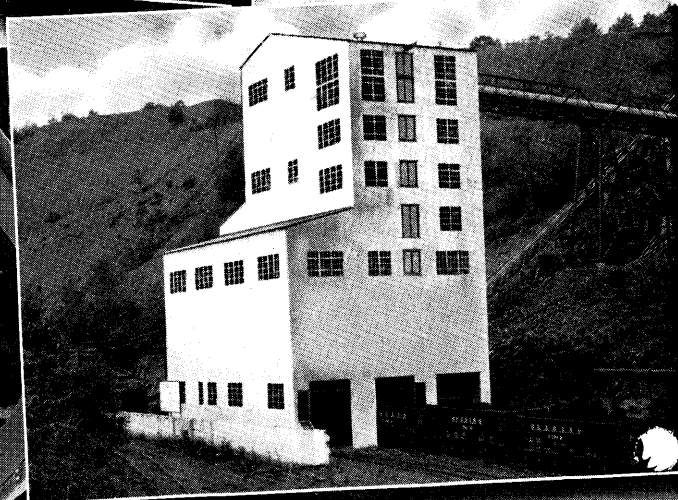
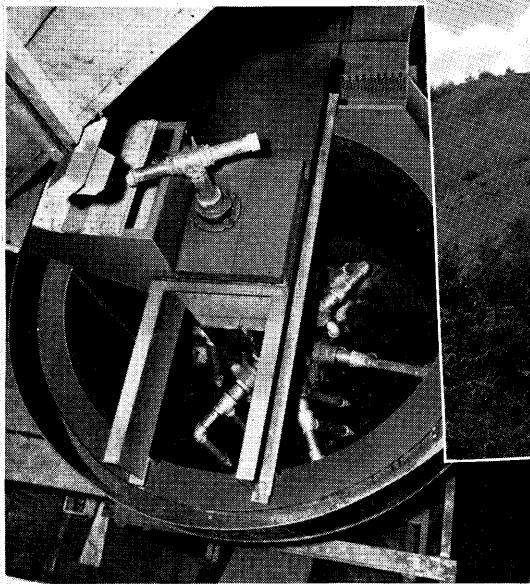
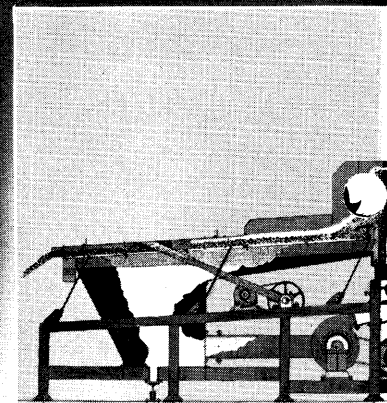
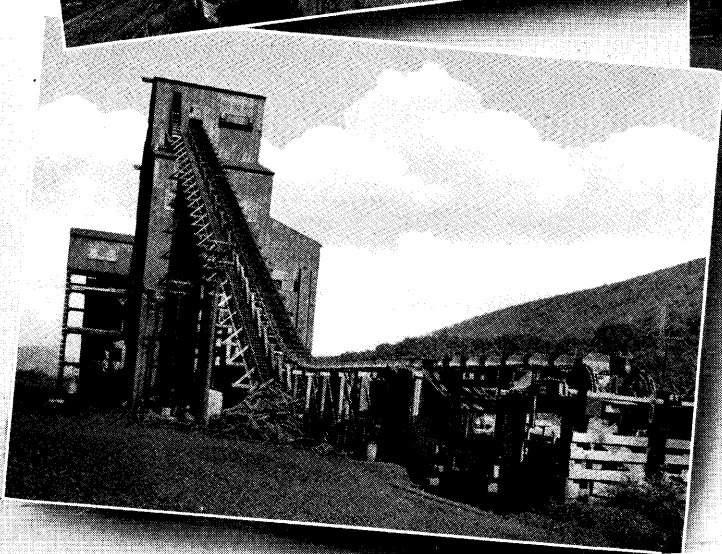
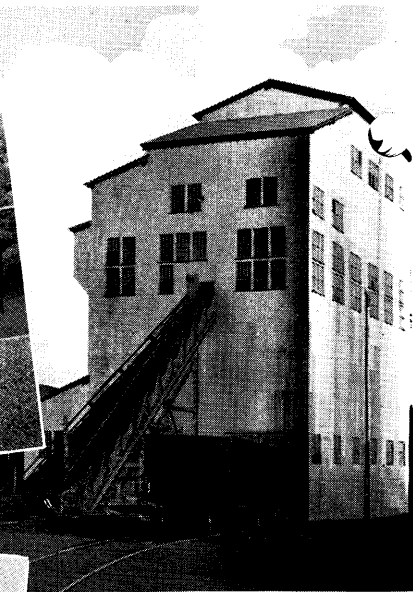
The White Haven Office Where the Plant and Engineering Staff Are
Always Ready to Advise and Help Meet the Problems of
Industry, No Matter How Large or Small.



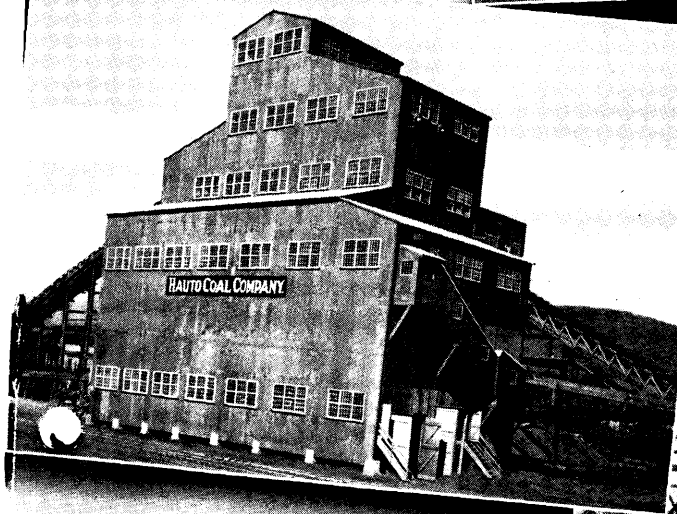
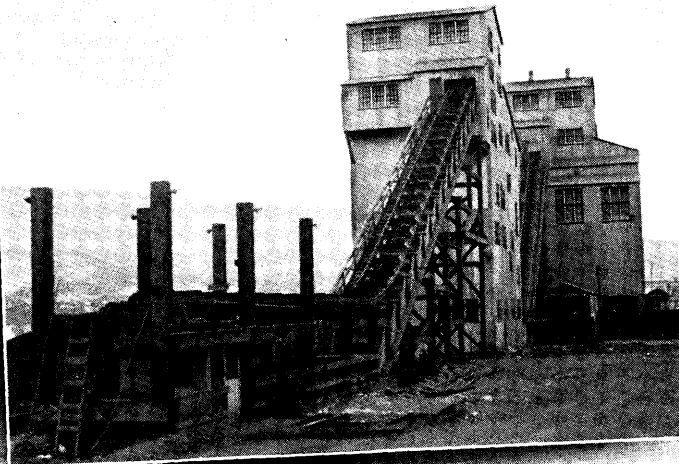
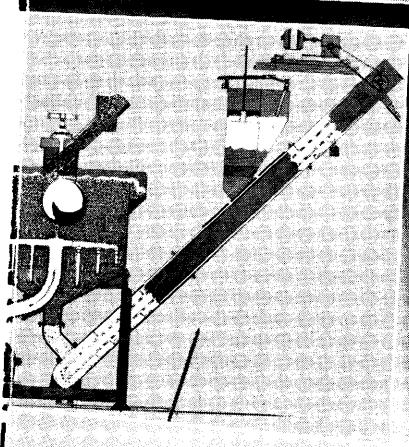
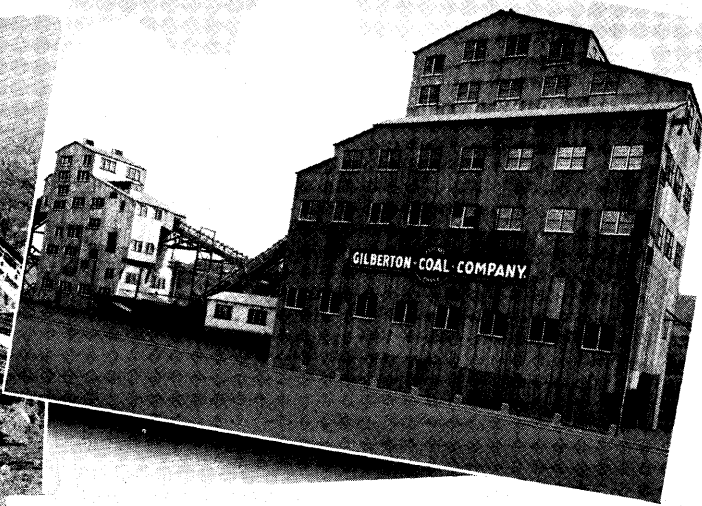
Foundry and Sheetmetal Buildings of the Main Plant.



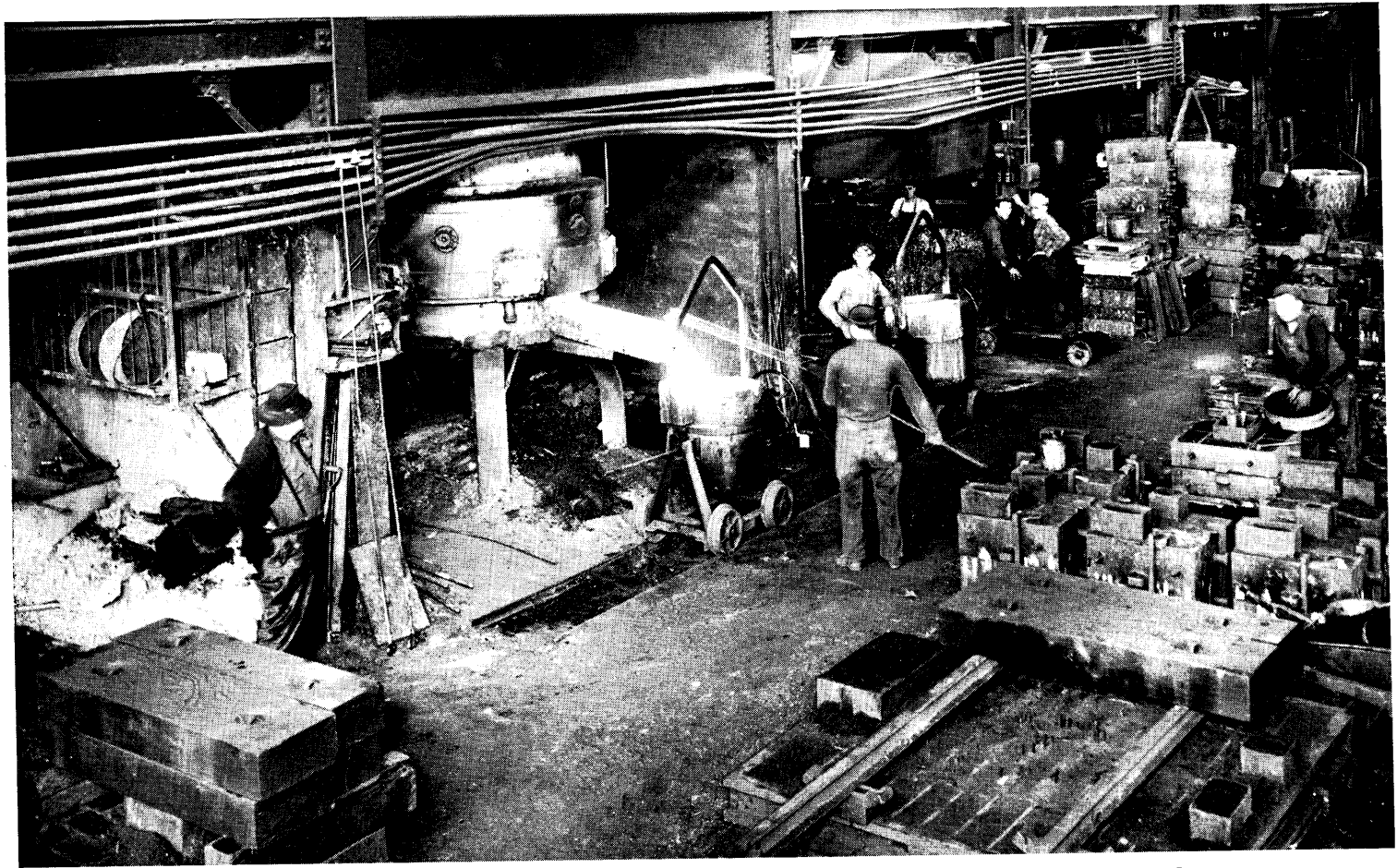
Our Workmen Are Trained and Skilled in the Production of Coal Mining and Preparation Equipment of the Highest Quality.



A GREAT NAME



IN THE COAL INDUSTRY



From Wilmot's Modern Cupola is Poured the Metal From Which Machine Part Castings Are Made.



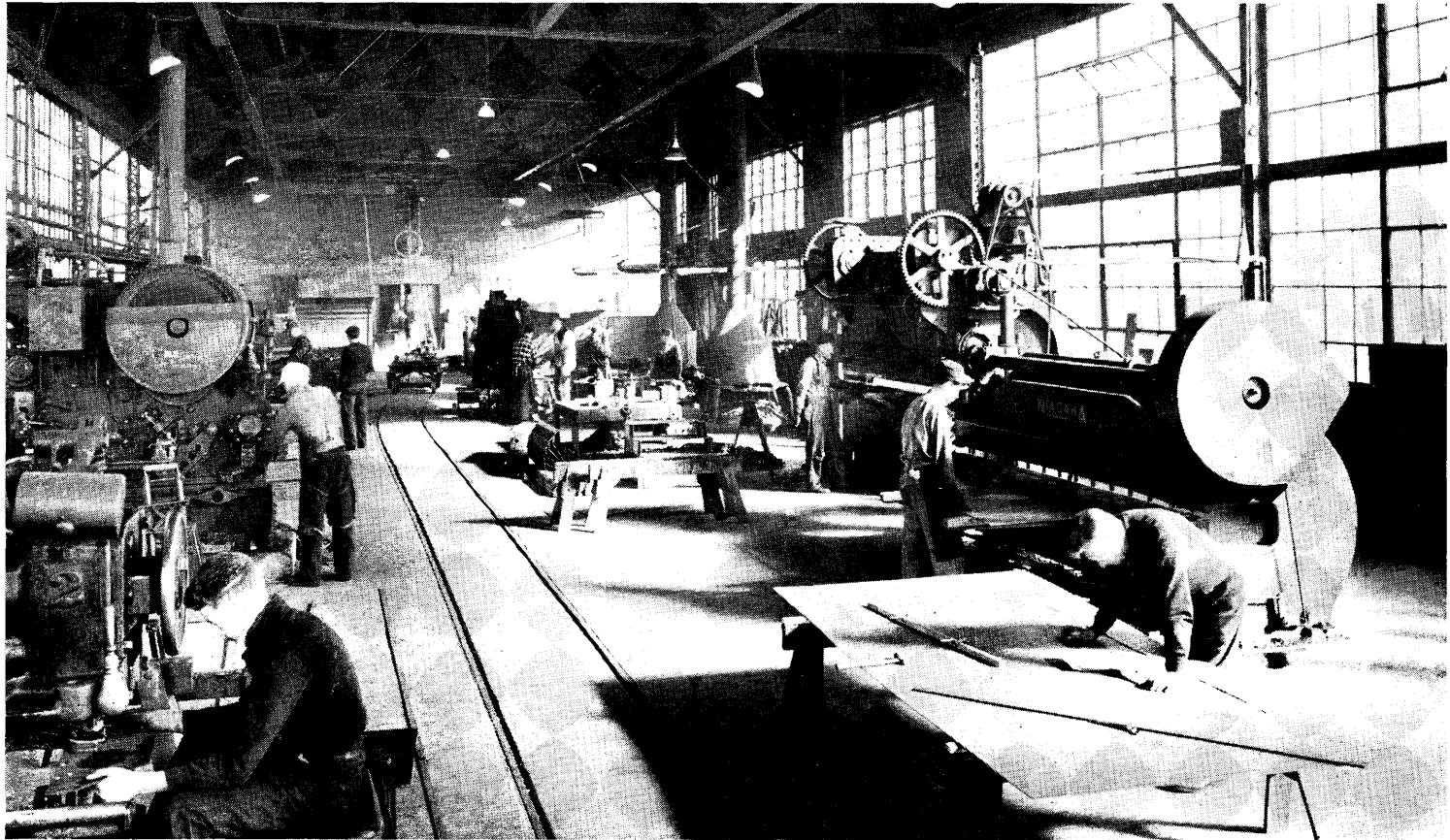
The Foundry is Spacious and Well Ventilated, Equipped With Modern Facilities for the Production of Commercial Size Castings.



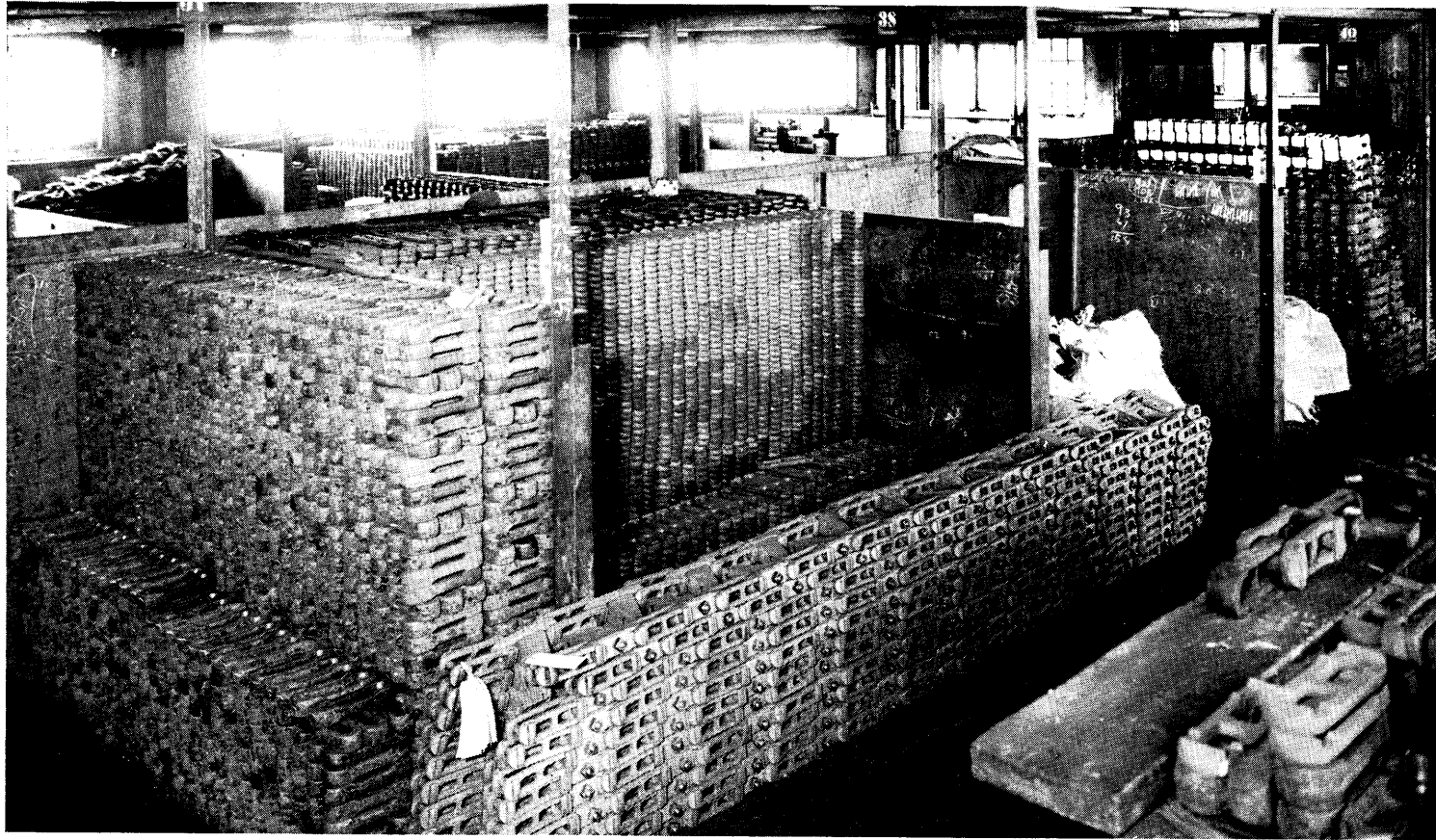
The Machine Shop is Well Ventilated and Lighted and Equipped With the Latest Type Machines That Are Operated By Expert Mechanics.



The Pattern Shop, Modernly Equipped, is Manned by Expert Craftsmen, Who Build Patterns to Meet the Most Rigid Industrial Specifications.



The Large Roomy Sheetmetal Shop is Equipped With the Latest Type Machinery to Handle the Building of All Kinds of Sheetmetal and Fabricated Equipment.



The Chain House is Lined With Tiers of Well Stocked Bins, Always Filled With Links, Pins and Attachments For Various Sizes of the Wilmot Keystone Rivetless Chain.



WILMOT PRODUCTS

COAL CLEANING

| Type of Machine | Sizes Cleaned |
|-------------------|---------------------------|
| HYDROTATORS | NUT TO No. 4 INCLUSIVE |
| CLASSIFIERS | No. 5 |
| HYDRO-SEPARATORS | BROKEN TO No. 4 INCLUSIVE |
| SIMPLEX JIGS | STEAMBOAT TO No. 1 BUCK |
| PORTABLE CLEANERS | BROKEN AND LARGER |

CRUSHING - CONVEYING - SIZING

| | |
|----------------------------|--------------------|
| SIZING SHAKERS | CRUSHING ROLLS |
| BUCKET ELEVATORS | DEWATERING SHAKERS |
| FLIGHT AND APRON CONVEYORS | |
| LIP SCREENINGS | DEWATERING SHAKERS |
| PUSH FEEDERS | |

CONSTRUCTION

COMPLETE COAL BREAKERS COAL CLEANING PLANTS

MINING

UNDERGROUND CHAIN CONVEYORS

MISCELLANEOUS

| | | |
|--------------------------|----------|----------------|
| MACHINING | CASTINGS | SETTLING TANKS |
| SPROCKETS | SHAFTING | PICKING TABLES |
| GEARS | PULLEYS | PATTERNS |
| KEYSTONE RIVETLESS CHAIN | | |



DESIGNERS - ENGINEERS - MANUFACTURERS

